

STABILA Australia Pty Ltd

t/a Hordern & Co

☎ 02 9417 6968

✉ sales@hordernandco.com.au

www.stabila.com

STABILA®



**Controlled measurement quality –
greater reliability on the site every day.**

The measuring distance and accuracy of laser distance measurers are directly dependent on lighting conditions and the reflective behaviour of the target point. To ensure that measuring distance and accuracy specifications are valid under realistic building site conditions, the ISO 16331-1 standard specifies the conditions under which the given specifications for accuracy and measuring distances must be maintained. The STABILA LD 220, LD 250 BT, LD 320, LD 420 and LD 520 laser distance measurers fulfil these requirements.



See all products at
www.stabila.com



www.youtube.com/StabilaTools



www.facebook.com/StabilaAustralia



EN 18252 10/15
Errors or changes in colour, technology
and equipment excepted.

**Laser distance measurers for real
professionals: accurate, quick and reliable
results for all applications**

The right laser distance measurer for every trade. Find the right measuring tool for your particular needs.

If you are thinking about buying a laser distance measurer, there are several things you should consider. This is especially true for tradespeople who need to take measurements and draw up quotes accurately and productively to save time and money (material used, for example). If you are adding a laser distance measurer to your toolbox, you must be sure to buy the right one. How? – Take a look at our checklist and find out which measuring tool is the best for you and your trade.

What should you bear in mind when selecting a laser distance measurer?

1. Will I be using the measuring tool indoors, outdoors or both?
2. Over what distances do I usually measure?
3. Do I just need the basic measuring functions, such as distance, area and volume, or do I need a tool offering more functions?
4. Do I need an interface for sharing the data measured?
5. Do I want to process the measurement data directly on the tool so I can draw up a quotation at speed?
6. How precisely do I need to measure?

Compare all of the STABILA laser distance measurers:

1. Laser functions (pages 16 – 17)
2. Technical features and specifications (pages 18 – 19)





Laser distance measurer LD 220: Measuring made easy

- Compact, easy-to-use laser with 4 basic measuring functions: length, area, volume and continuous measurement
- The laser delivers quick measurement results and assists you in your daily work, when calculating how much material is needed, for example
- The large digits make it easy to read
- Impact-resistant housing with shock-absorbent STABILA soft grip casing
- Designed for measurements up to 30 m

LD 220, (Art. No. 18816/o)

Comprising: Laser distance measurer LD 220, 2 x AAA batteries

Laser class	Output	Laser wavelength	Accuracy	Measuring distance
2	< 1 mW	635 nm	± 3.0 mm*	0.2 – 30 m*

Battery life	Batteries included	Protection class
up to 5,000 measurements	2 x AAA	IP 54

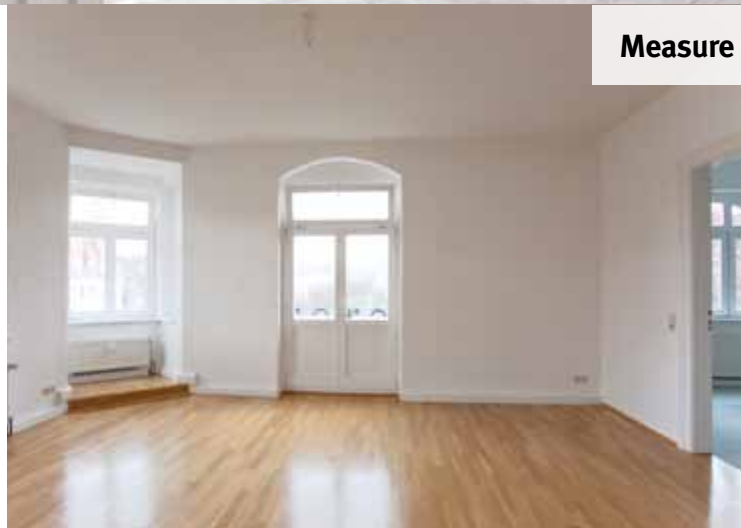
*Favourable conditions: white and diffusely reflecting target (wall painted white), weak background lighting, moderate temperatures



For all those who take pride in the quality of their work. Real professionals measure with STABILA.

STABILA

Measure up to 30 m



Use

- For everyone who works indoors

Use

- For everyone who works indoors and needs to document a large number of measurements



Laser distance measurer LD 250 BT: Measuring and documentation made simple

- Compact, easy-to-use laser with integrated Bluetooth® Smart 4.0 technology enables measurement data to be wirelessly transferred from the laser to a smartphone or tablet
- Free STABILA Measures app lets you transfer measurements directly to photos of the building site or drawings
- 4 basic measuring functions: length, area, volume and continuous measurement
- The laser delivers quick measurement results and assists you in your daily work, when calculating how much material is needed, for example
- The large digits and display lighting make it easy to read
- Impact-resistant housing with shock-absorbent STABILA soft grip casing
- Designed for measurements up to 50 m

LD 250 BT, (Art. No. 18817/7)

Comprising: Laser distance measurer LD 250 BT, 2 x AAA batteries

Laser class	Output	Laser wavelength	Accuracy	Measuring distance
2	< 1 mW	635 nm	± 2.0 mm*	0.2 – 50 m*

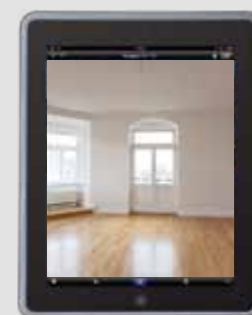
Battery life	Batteries included	Protection class
up to 5,000 measurements	2 x AAA	IP 54

* Favourable conditions: white and diffusely reflecting target (wall painted white), weak background lighting, moderate temperatures



STABILA 

Measure up to 50 m



Wireless connection to smartphone or tablet thanks to integrated Bluetooth® Smart technology (4.0) in the LD 250 BT. The free STABILA Measures app for iOS or android makes the transfer process incredibly simple.

More information on pages 14 – 15.



NEW

New technology – improved
measuring distance and accuracy



Measure up to 60 m

LD 320 laser distance measurer: Extremely compact – covers all of the most important measuring functions

- Compact tool with 8 measuring functions: length, area, volume, continuous measurement, Pythagoras with 2 and 3 measuring points, minimum and maximum tracking
- Rapid measuring results and easy operation ensure trouble-free work
- The large digits and display lighting make it easy to read
- Designed for measurements up to 60 m
- Impact-resistant housing with shock-absorbent STABILA soft grip casing
- The target tool (notch and bead principle) integrated in the housing allows targets to be located, even at great distances
- Includes a belt pouch and wrist strap

LD 320, 3-part set (Art. No. 18379/0)

Comprising: LD 320 laser distance measurer, belt pouch, wrist strap

Laser class	Output	Laser wavelength	Accuracy	Measuring distance
2	< 1 mW	635 nm	± 1.5 mm*	0.05 – 60 m*
Battery life		Batteries included	Protection class	
up to 5,000 measurements		2 x AAA	IP 40	



* Favourable conditions: white and diffusely reflecting target (wall painted white), weak background lighting, moderate temperatures



Use

- For everyone working indoors and / or outdoors

LD 520 laser distance measurer: Digital target locator – the smart way to measure

- High-contrast 2.4" colour display
- Camera with high image resolution – pin-sharp images even in strong light
- Digital target locator with cross-hair and 4x zoom
- Integrated Bluetooth® Smart 4.0 technology for transferring measurement data
- Free STABILA Measures app lets you transfer measurements directly to photos of the building site or drawings
- 360° inclination sensor for flexible measurement from any position (displays $\pm 180^\circ$)
- 18 functions: length, area, volume, continuous measurement, chain dimensions, Pythagoras with 2 and 3 measuring points, minimum and maximum tracking, timer, distances, trapezoid, triangular area, inclination ($\pm 180^\circ$), indirect

- distances and heights, inclined objects, elevation profiles
- Designed for measurements up to 200 m
- Impact-resistant housing with shock-absorbent STABILA soft grip casing
- Built-in calculator: lets you multiply or divide measurement data by fixed values (e.g. hourly rates or materials costs)
- $\frac{1}{4}$ " thread for fixing on a tripod – makes accurate locating of targets possible
- Includes a belt pouch and wrist strap

LD 520, 4-part set (Art. No. 18562/6)

Comprising: LD 520 laser distance measurer, target plate, belt pouch, wrist strap

Laser class	Output	Laser wavelength	Accuracy	Measuring distance
2	< 1 mW	635 nm	$\pm 1.0 \text{ mm}^*$	0.05 – 200 m*
Battery life		Batteries included		Protection class
up to 5,000 measurements		2 x AA		IP 54

* Favourable conditions: white and diffusely reflecting target (wall painted white), weak background lighting, moderate temperatures



In the cross-hairs: exact targeting even in strong sunlight.

- Very useful in strong sunshine and over long distances: you no longer have to look for a little red laser point.
- Large colour camera display allows you to align the LD 520 accurately to the target point.
- Enlarge or reduce the view with the 4x zoom.

- Crosshair sight helps you aim at the target point. The distance is then measured precisely.
- Display brightness can be easily adjusted to suit ambient light conditions.
- The light sensor automatically controls the display lighting. This helps conserve battery life.

Use

- For everyone working indoors and / or outdoors who has to locate targets over large distances



Measure up to 200 m



Quickly and precisely calculate values and document them in conjunction with the Bluetooth® Smart technology (4.0) integrated in the LD 520 and the free STABILA Measures app for smartphones or tablets.

More information on pages 14 – 15.

LD 250 BT and LD 520 laser distance measurer with Bluetooth® technology: Wirelessly transfer and document measurements with ease



Do you use mobile devices on the building site?

If so you will be impressed by the new possibilities: The integrated Bluetooth® Smart technology (4.0) allows wireless transfer of your measurement data from the LD 250 BT and LD 520.

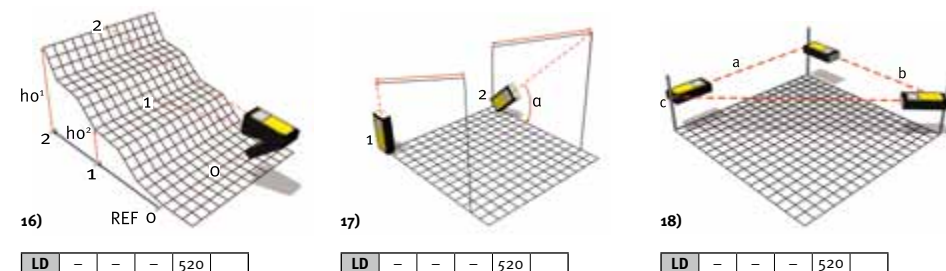
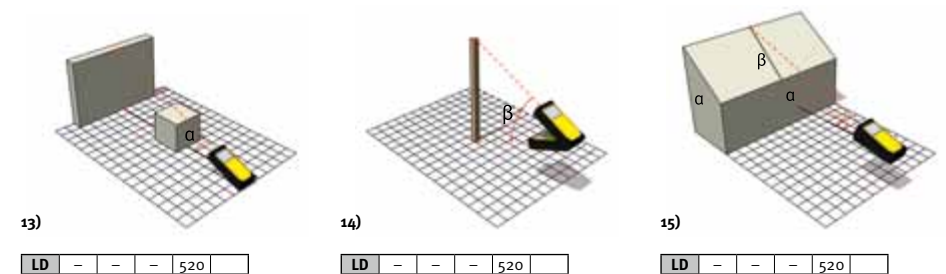
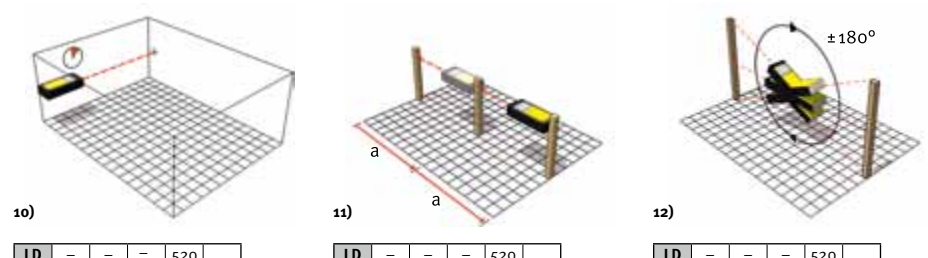
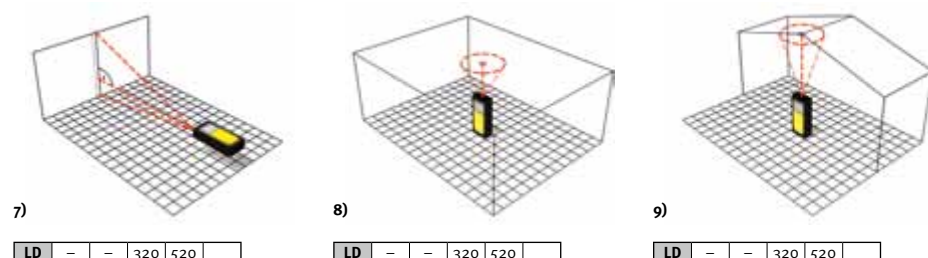
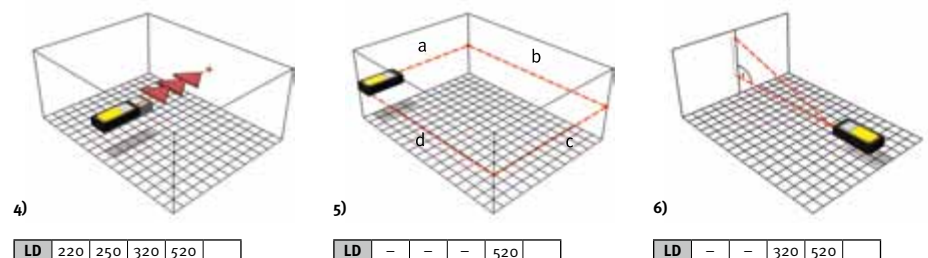
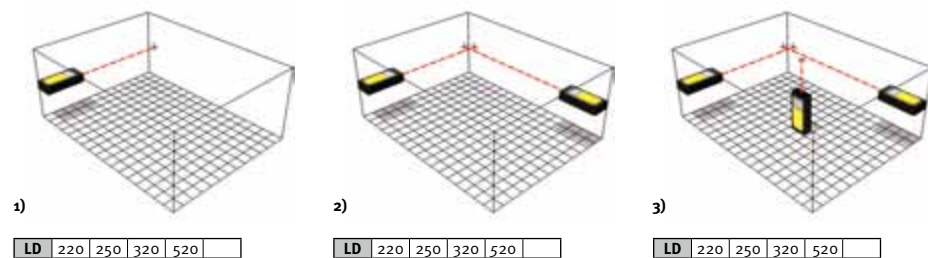
We have developed a free app for your smartphone or tablet, **STABILA Measures**, which enables you to produce drawings of areas, spaces and buildings, or quick sketches by hand, and to dimension them directly.

Also measuring data can be easily inserted into photos of the site. As a result you can document everything straight away on site and communicate with your team via your smartphone.



You can download the **STABILA Measures** app for iOS and android for free.

Overview of functions: Check which function package you need



1) Length measurement

2) Area measurement

3) Volume measurement

4) Continuous measurement: for quickly finding a desired distance

5) Chain dimensions

6) Pythagoras function 1: determines a distance using two related measurements

7) Pythagoras function 2: determines a distance using three related measurements

8) Minimum tracking: minimum continuous measurement is used to determine the shortest distance between two points

9) Maximum tracking: continuous measurement to determine e.g. the maximum diagonal measurement

10) Timer: self-timer function, e.g. for shake-free measurement from a tripod

11) Stake out distances

12) Inclination measurement: the inclination sensor measures inclinations in the range $\pm 180^\circ$

13) Indirect distance measurement: allows measurement of a horizontal line that cannot be directly accessed

14) Indirect height measurement: determines a height (e.g. of a building) that does not offer a suitable reflection point

15) Measurement of inclined objects: enables inclined, not directly accessible distances (e.g. a roof slope) to be measured

16) Elevation profile measurement: determines the difference in height between a reference point and other measurement points

17) Trapezoidal measurement: allows measurement of oblique lines that are not directly accessible

18) Triangular area measurement: calculates the area of a triangle by measuring the sides of the triangle

Comparison of STABILA laser distance measurers

The right STABILA laser distance measurer for every need

LD 220



NEW

Measuring made easy
• 4 basic measuring functions

LD 250 BT



NEW

Measuring and documentation made simple
• 4 basic measuring functions
• Bluetooth® technology for the wireless transfer and documentation of measurement data

LD 320



Extremely compact – covers all of the most important measuring functions
• Enhanced function package
• High measuring accuracy and precision

LD 520



Digital target locator – the smart way to measure
• Comprehensive function package
• Bluetooth® technology for the wireless transfer and documentation of measurement data
• Integrated calculator for calculating material and labour costs



	LD 220	LD 250 BT
Area of use		
Working environment	Indoors	Indoors
Target locator	–	–
Thread for use on tripod (reliable measurements over large distances)	–	–
Functionality		
Measuring functions (quantity)	4	4
Additional measurement data e.g. perimeter, wall areas, ceiling / floor area etc.	–	–
Data transfer	–	Bluetooth® Smart (4.0)
Measurement app (free)	–	STABILA Measures
Calculator (multiply, divide, add, subtract)	–	–
Technical data		
Measuring accuracy*	± 3.0 mm	± 2.0 mm
Measuring distance*	0.2 – 30 m	0.2 – 50 m
Display illumination	–	✓
Beep	–	✓
Reference change	Rear	Rear
History memory	–	–
Protection class	IP 54	IP 54
Size	approx. 115 x 53 x 25 mm	approx. 115 x 53 x 25 mm
Weight (incl. batteries)	approx. 95 g	approx. 95 g

* Favourable conditions: white and diffusely reflecting target (wall painted white), weak background lighting, moderate temperatures

	LD 320	LD 520
Area of use		
Working environment	Indoors / outdoors	Indoors / outdoors
Target locator	Notch and bead principle	Digital (camera display with 4x zoom)
Thread for use on tripod (reliable measurements over large distances)	–	1/4"
Functionality		
Measuring functions (quantity)	8	18
Additional measurement data e.g. perimeter, wall areas, ceiling / floor area etc.	–	✓
Data transfer	–	Bluetooth® Smart (4.0)
Measurement app (free)	–	STABILA Measures
Calculator (multiply, divide, add, subtract)	–	Integrated calculator, calculation factors are entered individually
Technical data		
Measuring accuracy*	± 1.5 mm	± 1.0 mm
Measuring distance*	0.05 – 60 m	0.05 – 200 m
Display illumination	✓	✓
Beep	✓	✓
Reference change	Front, rear	Front, rear, end stop, tripod
History memory	–	Last 30 values
Protection class	IP 40	IP 54
Size	approx. 100 x 54 x 30 mm	approx. 144 x 58 x 32 mm
Weight (incl. batteries)	approx. 100 g	approx. 220 g